

# midcentury marvel

Bold yet restrained design choices make this East Vancouver, B.C., bungalow anything but ordinary. Written by **Christina Symons** / Photography by **Janis Nicolay**



## When interior designer

Mark Pritchard and his partner, landscape architect Daryl Tyacke, went house hunting in a traditional neighbourhood in East Vancouver, B.C., they chose what Mark calls a “plain-Jane bungalow” with potential. The couple redesigned and renovated the 1940s property, blowing out a wall, installing a modern kitchen and adding professional architectural lighting. Today, their sharply dressed 940 sq. ft. abode houses a finely honed collection of original midcentury pieces, contemporary artwork and custom furniture – plus a few off-the-shelf selections thrown in for good measure.

## small spaces – think big

Make a strong statement by selecting a few large objects, such as oversize furniture or artwork.

STYLING BY HEATHER CAMERON



**OPPOSITE** Investment pieces in the living area include a custom sofa, a vintage chair by Robsjohn Gibbings and an Eames Molded Plywood Lounge chair. Designed by Marcel Breuer in the 1920s, the Laccio coffee table set looks at home atop Zoë Luyendijkz’s colourful contemporary carpet. “We’ve always loved midcentury modern and contemporary furniture, and started collecting before we had even bought the house,” says homeowner and interior designer Mark Pritchard, who lives here with his partner, Daryl Tyacke.

**TOP** Divided into several zones for entertaining, dining and cooking, the open-concept space is unified through the use of consistent materials, style and colours. “I typically prefer fairly light walls in small open spaces that are interconnected,” says Mark, who painted the walls, ceiling and trim a warm white. “If you start changing or adding colours, it chops up the spaces too much.”

**MIDDLE** Mark (left) and Daryl relax in the dining area, which is furnished with a marble-top Saarinen table, and Alias dining chairs. Faithful friend Hudson reclines closeby.

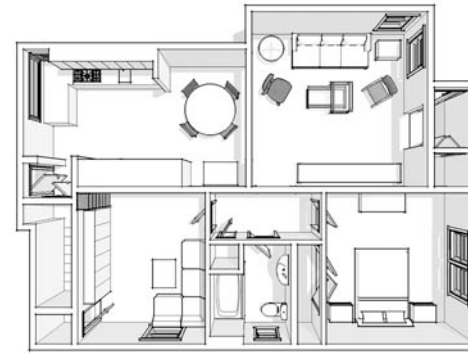
**BOTTOM** Anchoring the far wall of the living area is a low sideboard in black brushed pine. “This huge dramatic credenza works because it’s such a strong statement piece and a really nice surface to display a few objects,” says Mark. George Vergette’s *Rescind Paradise*, which is awash in ruby red resin, is a definite attention getter. →

“In a small home, use as few materials as possible and continue them throughout so the look is seamless” MARK PRITCHARD, HOMEOWNER AND INTERIOR DESIGNER

**BELOW LEFT** What’s the sense of a drop-dead gorgeous kitchen without quality fixtures, gourmet appliances and practical workspaces? Fully kitted out with premium Fisher & Paykel appliances, the room also features contemporary recessed lighting and sleek European fixtures. Notice also the generous distance between countertop and cabinetry – a full 24”, rather than the average 18” in most kitchens – to compensate for the lack of windows.

**BELOW RIGHT** The multipurpose kitchen wall offers a valuable lesson in maximizing space while streamlining the aesthetic. During the day, Daryl and Mark leave the doors of the built-in appliance centre open, but they can close them if company’s coming, or even use the area to lay out appetizers and pour champagne. Custom cabinetry showcases quarter-cut horizontal-grain walnut – a warm wood that complements the original oak floors.

for a 3-D version of the floorplan, check out [styleathome.com/pritchard](http://styleathome.com/pritchard)



small spaces – see potential  
With a hidden built-in Murphy bed, a small cosy den can effortlessly double as a guest room.

**TOP** Mark and Daryl spend a great deal of downtime in the den. Their books, magazines and entertainment equipment are so well organized they’ve visually become the room’s wallpaper, according to Mark. A black-and-white photograph by Daryl hangs on the “wall” hiding a Murphy bed for overnight guests.

**MIDDLE LEFT** Even in a tight space, this modern sectional and ottoman fit perfectly, lending a laid-back air to the den. Artwork by Trevor Good is hung low, countering the scale of the sofa.

**MIDDLE RIGHT** Night tables were stripped and given a lime-style finish. Slightly oversize, the tall ‘60s table lamps add a quirky sense of scale to the diminutive bedroom. “We love these lamps,” says Mark, who enjoys hunting for distinctive vintage originals. WHERE TO FIND IT, PAGE 94



small spaces – do double duty  
A retractable small-appliance station is a cool incognito cocktail bar.



**RIGHT** In the bedroom, the mood is calm and masculine. Mark used a different colour on the walls to delineate this personal space from the rest of the living zones. “It’s one of those funny green-grey-yellow colours you might have seen in the ‘50s, but is more livable,” says Mark. “We didn’t want the bedroom to appear too harsh, but we didn’t want it to feel feminine either.”

ILLUSTRATION BY SCOTT ROGERS

